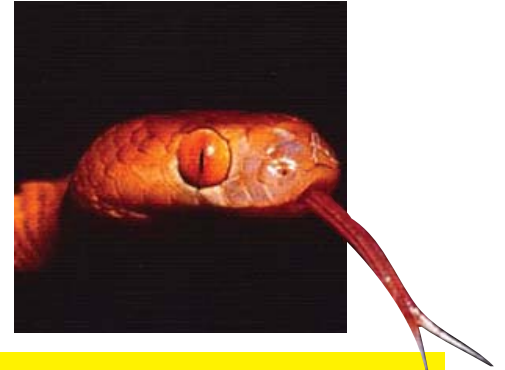


# WILD SWAZILAND

## Common animals and plants

R Boycott B Forrester L Loffler A Monadjem



Handy A5 size field guide, 540 species with photos

Historical perspective  
Geology and cross-section  
Vegetation types

National parks  
Glossary  
Useful contacts



**Leopard**  
*Panthera pardus*, Ingwe  
Very sparsely distributed. Occurs at Malolotja Nature Reserve, Mlilwane Wildlife Sanctuary and Hlane National Park; a vagrant elsewhere. Wide habitat tolerance, but requires cover for hunting. Unmistakable **robust build and spotting pattern**. Feeds on medium-sized antelope, hunting by wait-and-ambush strategy. Typically drags prey up a large tree where it is safe from other predators. "Near Threatened" in the Swazi RDB.  
Mass: 60 kg

### MAMMALS

B



**African darter**  
*Anhinga rufa*  
Occurs sparsely throughout the country. Associated with quiet, slow flowing water on dams, weirs and larger rivers. **Body plumage is dark, neck rufous**. Distinguished from cormorants by long sinuous neck and needle-sharp beak. Forages with only head and neck out of water, diving for fish and occasionally frogs. Nests colonially in heronries. Nest is a messy platform of sticks, typically built in dead tree over water.  
Length: 79 cm

### BIRDS

W



**Redbreast tilapia**  
*Tilapia rendalli*  
Common in all major river systems in the tropical bushveld regions. Prefers quiet vegetated habitats in the lower reaches of larger rivers, but also found in dams. Another tilapia, *T. sparamanii*, occurs in similar habitat in the temperate highveld region. *T. rendalli* has a **bright red breast and 5 to 7 broad vertical bars on the body** while *T. sparamanii* has 8 to 9 narrower vertical bars on the body and darkly pigmented pelvic fins.  
Length: 400 mm

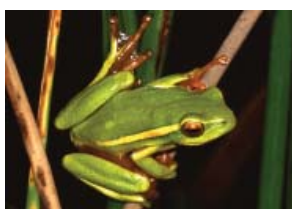
### FISHES

W

SB

B

L



**Yellow-striped reed frog** **AMPHIBIANS**  
*Hyperolius semidiscus*  
Uncommon species restricted to the temperate highveld. Favours deep pools at the bottom of waterfalls along medium to large highveld rivers flowing through montane grassland. Call is a series of harsh creaks descending in frequency. Has a **bright yellow stripe along sides of green body and pink discs on tips of fingers and toes**. The green reed frog, *H. tuberilinguis*, occurs in the tropical regions and lacks the yellow stripe.  
Length: 37 mm

W

G

**Puff adder** (♀) **REPTILES**  
*Bitis arietans*, Libululu  
Occur throughout all regions in a wide range of habitats. Potentially the most dangerous snake because they are heavy bodied and cannot move out of the way quickly. They rely on camouflage to avoid detection but if trodden on, will not hesitate to bite. Feeds on small mammals and birds. Key features include the **wide, flat head very distinct from the neck and, down the back, a series of dark chevrons pointing to the tail**.  
Length: 1.1 m



G

SB

B

L

**African monarch**, Luvivane  
Class *Insecta*, Order *Lepidoptera*, Family *Danaidae*  
Widespread. Large-winged and brightly coloured (*Danaus chrysippus*). Flies all year. Distasteful to birds because of poisonous chemicals stored in its body.  
Wingspan: 70 mm



### INVERTEBRATES

**Erythrina lysistemon**  
**Sacred coral tree**, Umsinsi  
Striking small to medium deciduous tree found on wooded mountainsides, in bushveld, and along forest fringes. Broad trunk branching from low down. Bark grey and smooth, often with scattered thorns. Leaves 3-foliate with heart-shaped leaflets and **two long glands at their base**. Flowers showy, bright red (Jun-Oct). Fruit a slender cylindrical pod, **bead-like**. Poisonous red seeds, ornamental with a black spot, known as lucky beans.  
FABACEAE Height: up to 12 m



SB

G

L

F

**Gloriosa superba**  
**Flame lily**, Simiselo.  
Lowveld climber found in rocks and thickets. Pendant flowers, bright yellow or flame-coloured, narrow wavy tepals (Nov-Mar). Leaves shiny, **tendrils at tips**. **Poisonous**.  
FLAGELLARIACEAE Height: up to 2 m



### FLOWERS

HABITAT REFERENCE  
SYMBOLS

ENGLISH, SCIENTIFIC  
& SISWATI NAMES

COLOUR CODED PAGES  
FOR EASY REFERENCE